

2023 Onwards: A Level Geography

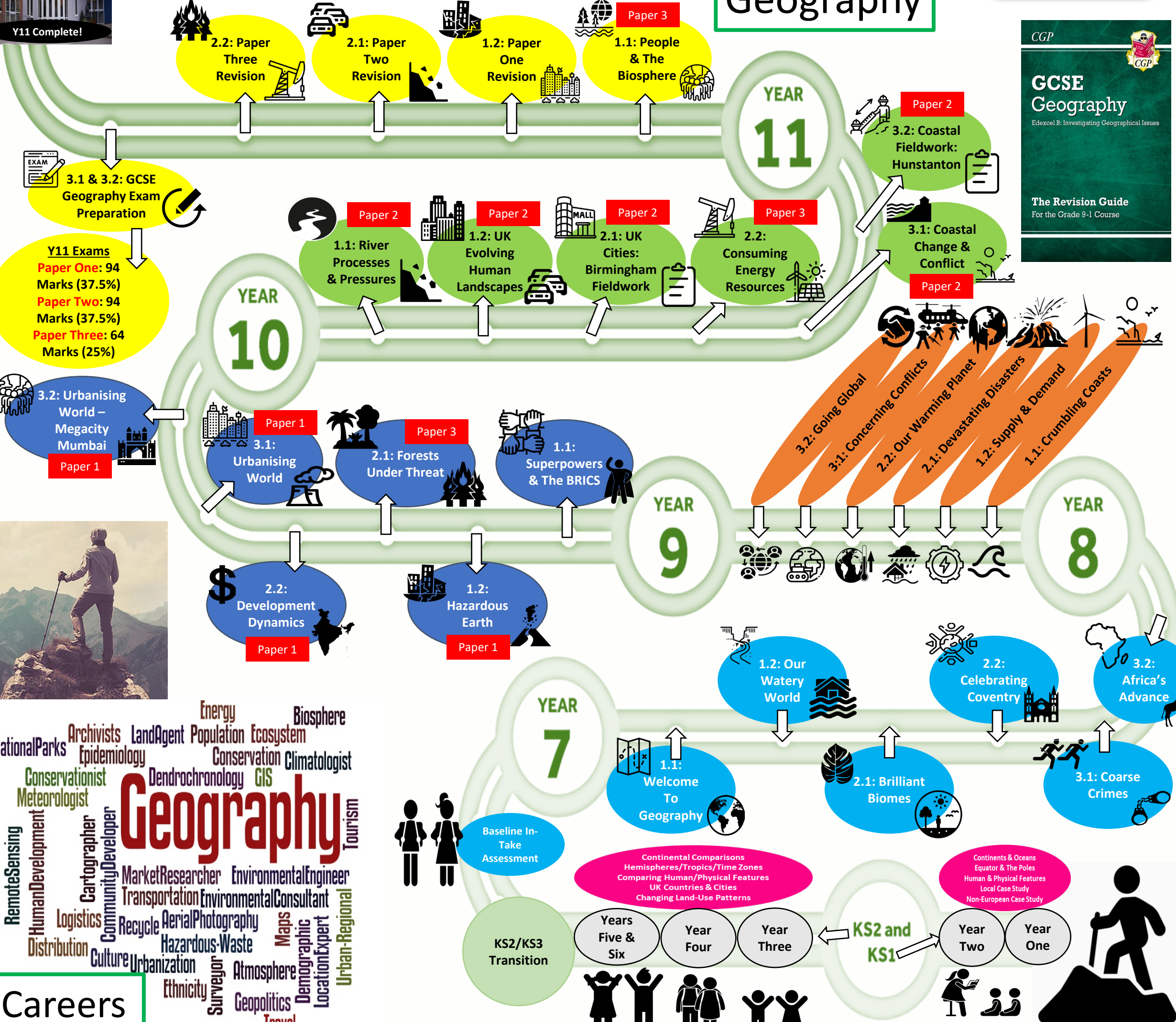
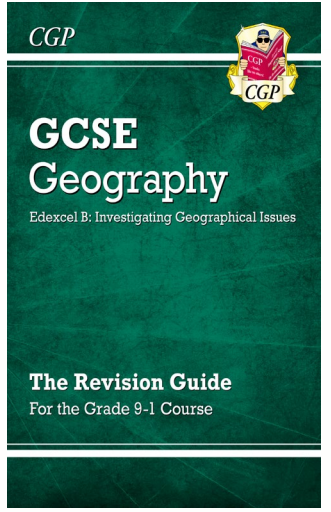
Paper One: 30%. Paper Two: 30%. Paper Three: 20%.
Independent Investigation (Report): 20%.

- Dynamic Landscapes**
 - 1) Tectonic Processes & Hazards
 - 2) Landscape Systems, Processes & Change
 - 2A/2B) Coastal Or Glacial Change
- Dynamic Places**
 - 3) Globalisation
 - 4) Shaping Places
 - 4A/4B) Regenerating Or Diverse Places
- Physical Systems & Sustainability**
 - 5) Water Cycle & Water Insecurity
 - 6) Carbon Cycle & Energy Security
- Human Systems & Geopolitics**
 - 7) Superpowers
 - 8) Global Development & Connections
 - 8A/8B) Health, Human Rights & Intervention Or Migration, Identity & Sovereignty.

OUR LEARNING JOURNEY



Geography



Geography

Careers

- Remote Sensing
- Human Development
- Cartographer
- Community Developer
- Logistics
- Distribution
- Culture
- Urbanization
- Survivor
- Ethnicity
- Geopolitics
- Travel
- Demographic
- Location Expert
- Urban-Regional
- Market Researcher
- Transportation
- Environmental Consultant
- Environmental Engineer
- Recycle
- Aerial Photography
- Hazardous-Waste
- Maps
- Demographic
- Location Expert
- Urban-Regional
- Conservationist
- Meteorologist
- Dendrochronology
- GIS
- Archivists
- Land Agent
- Population
- Ecosystem
- Conservation
- Climatologist
- Biosphere
- Energy
- National Parks
- Epidemiology

Year 8 Content

- 1.1: Crumbling Coasts
- 1.2: Supply & Demand
- 2.1: Devastating Disasters
- 2.2: Our Warming Planet
- 3.1: The Middle East & Geography Conflicts
- 3.2: Going Global



Year 7 Geography: KS3



**CARDINAL
NEWMAN
CATHOLIC SCHOOL**

**“Enthusiastic Explorers,
Aspiring Activists,
Diligent Decision-
Makers”.**

L6: Opportunities & Challenges – Africa’s People.
L7: Africa’s Demographic & Urban Growth.
L8: Africa’s Future.
L9: Assessment.

L1: Introducing Africa – Counties, Culture & Climate.
L2: Africa – Human & Physical Features.
L3: Africa’s Development – Past, Present & Future.
L4: Africa’s Contrasting Biomes – Which Is Best?



3.2: Africa’s Advance

L6: Mitigating Crime – UK Law Enforcement.
L7: International Crime – Terrorism, Trafficking & Torture.
L8: The Prison System – UK vs. The World.
L9: Assessment.



L1: Introduction To Crime.
L2: Presenting Crime Data – UK vs. Europe.
L3: UK Crime Hotspots – Being A Detective.
L4: The Causes & Consequences Of Crime.



3.1: Coarse Crimes



L1: Coventry's Physical & Human Features.
L2: The Origin – Historical Change Through Time.
L3: Coventry’s Industrial Revolution.
L4: Coventry – Push vs. Pull Factors.

L6: Coventry vs. West Midlands Metropolis.
L7: The Coventry Culture – Urban Change & Tourism.
L8: Coventry’s Future – Regeneration & Rebranding.
L9: Assessment.



2.2: Celebrating Coventry

L7: The Tundra Biome.
L8: The Boreal Forest (Taiga) Biome.
L9: The Deciduous Forest – UK Focus.
L10: Biome Extinction – Coral Reefs.
L11: Assessment.



L1: Introducing Biomes.
L2: Biome Importance.
L3: The Tropical Rainforest Biome.
L4: The Desert Biome.
L5: The Tropical Grassland Biome.

2.1: Brilliant Biomes

L7: River Management.
L8: The Bosccastle Floods.
L9: The Kerala Floods.
L10: River Land Use.
L11: Assessment.

L1: The Water Cycle.
L2: The Drainage Basin.
L3: River Processes.
L4: The River Course.
L5: River Landforms.



1.2: Our Watery World

L1: Introduction To Geography – Biomes.
L2: CCO – Continents, Countries & Oceans.
L3: Our Timeline – Pangea & The Ice Age
L4: Earth’s Physical Processes – The Cycles

L6: Coventry – Our City, Our Home.
L7: Hazardous Earth – Climatic & Tectonic.
L8: Development – Introducing The BRICS
L9: Consuming Energy Resources

Baseline Assessment

1.1: Welcome To Geography

Continental Comparisons
Hemispheres/Tropics/Time Zones
Comparing Human/Physical Features
UK Countries & Cities
Changing Land-Use Patterns

Continents & Oceans
Equator & The Poles
Human & Physical Features
Local Case Study
Non-European Case Study

Years Five & Six

Year Four

Year Three

Year Two

Year One



**OUR LEARNING
JOURNEY**

Missing Lessons – Pit Stops & Assessments

Year 9 Content

- 1.1: Superpowers & The BRICS
- 1.2: Hazardous Earth
- 2.1: Forests Under Threat
- 2.2: Introducing Development Dynamics
- 3.1: India & Challenges Of An Urbanising World
- 3.2: Megacity Mumbai

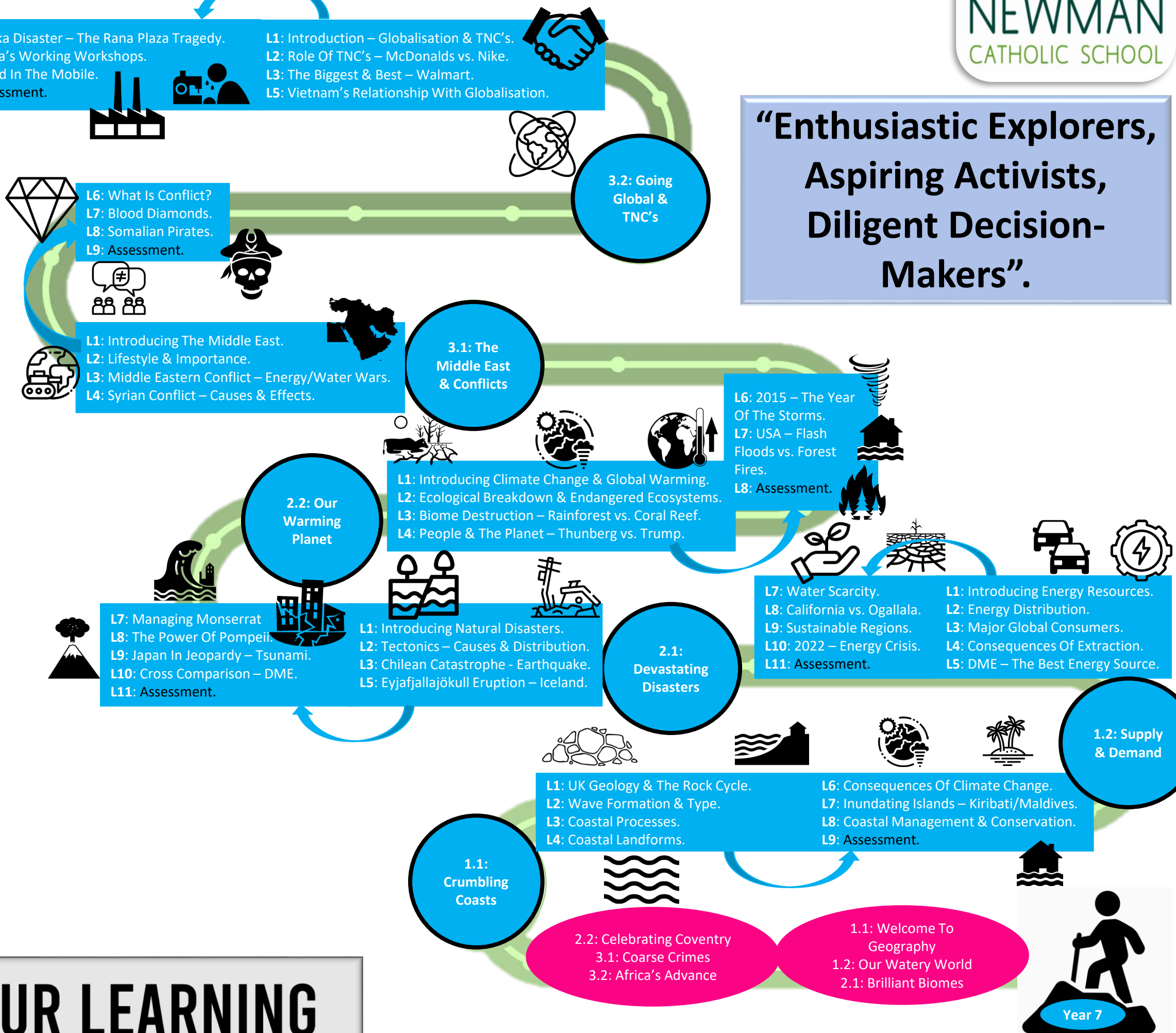


Year 8 Geography: KS3



**CARDINAL
NEWMAN
CATHOLIC SCHOOL**

**“Enthusiastic Explorers,
Aspiring Activists,
Diligent Decision-
Makers”.**



**OUR LEARNING
JOURNEY**

Missing Lessons – Pit Stops & Assessments

Year 10 Content (GCSE)

- 1.1: River Processes & Pressures – P2
- 1.2: UK Human Landscapes: London – P2
- 2.1: UK Human Landscapes: Fieldwork – P2
- 2.2: Consuming Energy Resources – P3
- 3.1: Coastal Change & Conflict – P2
- 3.2: Coastal Change & Conflict – Fieldwork – P2

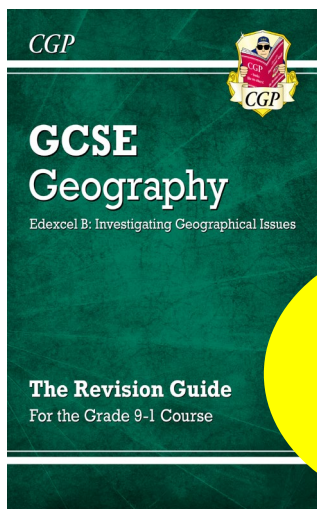
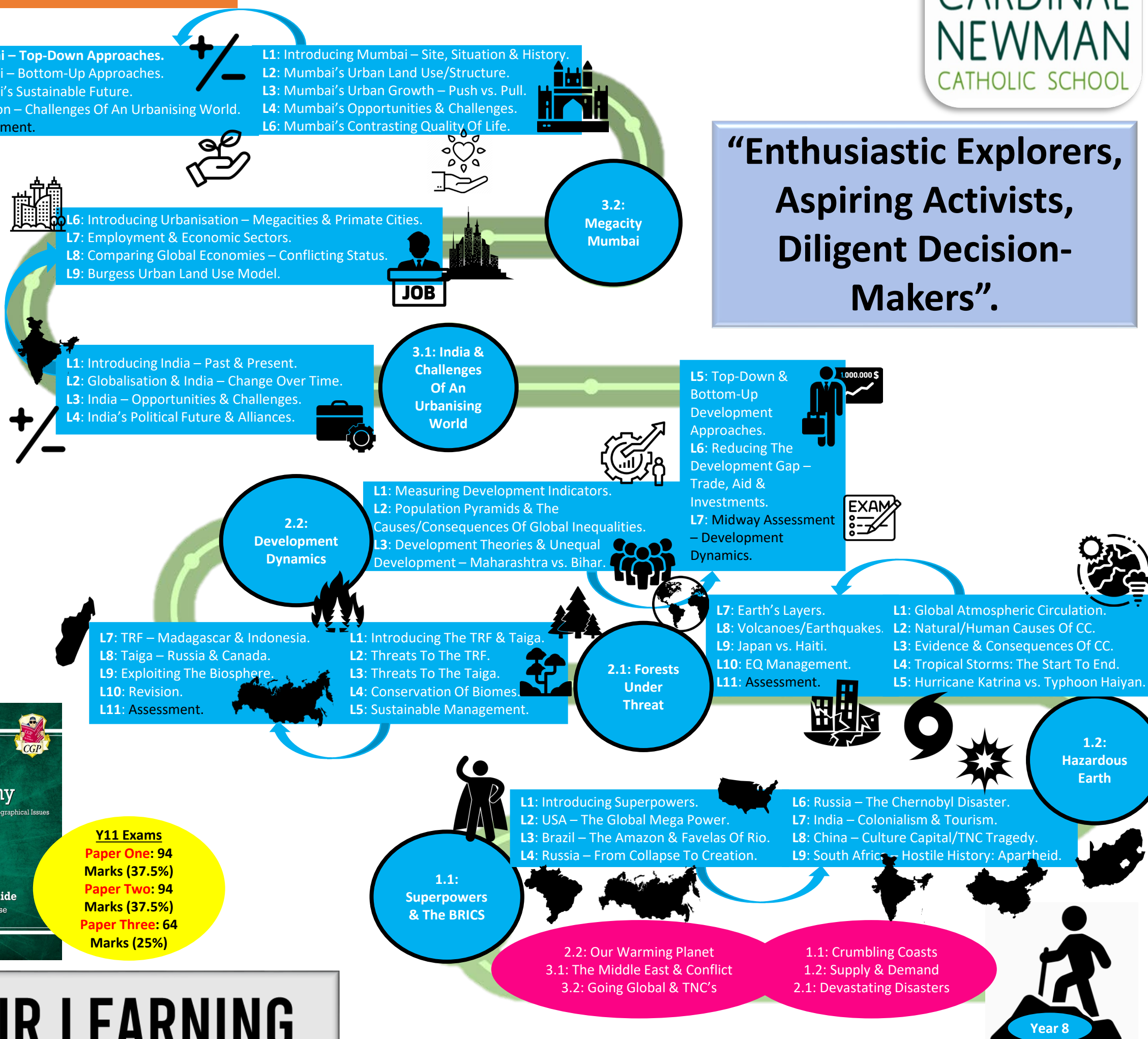


Year 9 Geography: KS3



**CARDINAL
NEWMAN
CATHOLIC SCHOOL**

**“Enthusiastic Explorers,
Aspiring Activists,
Diligent Decision-
Makers”.**



Y11 Exams
Paper One: 94 Marks (37.5%)
Paper Two: 94 Marks (37.5%)
Paper Three: 64 Marks (25%)

**OUR LEARNING
JOURNEY**

Missing Lessons – Pit Stops & Assessments

Year 11 Content (GCSE)

- 1.1: People & The Biosphere– P1
- 1.2: Paper One Revision.
- 2.1: Paper Two Revision.
- 2.2: Paper Three Revision.
- 3.1: Exam Practice & Skills – P1/P2/P3
- 3.2: Exam Practice & Skills – P1/P2/P3



Year 10 Geography: KS4



CARDINAL
NEWMAN
CATHOLIC SCHOOL

**“Enthusiastic Explorers,
Aspiring Activists,
Diligent Decision-
Makers”.**

- L16: End Of Year Assessment.
- L15: Revision: Coastal Challenges & Controversy.
- L14: Pre-Fieldwork Book – Write-Up.
- L13: Equipment, Data Presentation & Analysis.
- L11: Hypothesis, Methodology & Risk Assessment.
- L10: Introducing Fieldwork – Hunstanton’s Background.
- L9: UK Coastal Challenges & Controversy.



- L8: Hemsby & Hopton.
- L7: Happisburgh – Erosion & Management.
- L5: Holderness Coastline.
- L4: Christchurch Bay.
- L3: North Norfolk Coastal Strategies.
- L2: North Norfolk – Introducing Floods.
- L1: Introducing South-East England’s Coastlines.



**3.2: Coastal
Change &
Conflict -
Fieldwork**

- L14: UK Coastal Threats – 8 Mark Exam Practice.
- L13: UK Sea Level Rise – Causes & Consequences.
- L12: UK Coastline Comparison.
- L11: 2013 Storm Surge – Causes & Consequences.
- L10: Coastal Management – Engineering Strategies.
- L9: UK Coastal Challenges & Controversy.
- L8: Humans Along The Coastline.
- L6: Depositional Landforms.
- L5: Coastal Transportation & Deposition.
- L4: Erosional Landforms.
- L3: Coastal Physical Processes.
- L2: Wave Formation, Type & Power.
- L1: UK Coastal Geology & Coastline Types.



**3.1: Coastal
Change &
Conflict**

- L12: Revision – Consuming Energy Resources.
- L11: DME – People & The Environment.
- L10: Key Energy Players – The Stakeholders.
- L9: Renewable Energy – Costs vs. Benefits.
- L8: Energy Efficiency – London.
- L7: Fossil Fuel Exploration – Exploiting Africa.
- L6: Gazprom – Costs Of Developing Fossil Fuels.
- L4: The Athabasca Tar Sands – Costs & Benefits.
- L3: UK & Global Oil Demand – The Geopolitics.
- L2: Inequality Of Accessing & Extracting Energy.
- L1: Classifying Energy Types.



**2.2:
Consuming
Energy
Resources**

- L8: Regeneration/Rebranding.
- L10: Introducing Fieldwork.
- L11: Birmingham’s Background.
- L12: Data Presentation & Analysis.
- L13: Unforeseen Investigations.
- L14: Revision – Birmingham & London.



- L1: Birmingham – Site & Situation.
- L2: Birmingham’s Urban Structure.
- L3: Causes & Consequences – Migration .
- L4: Deprivation & Inequality – The Effects.
- L6: Challenges Facing Birmingham.
- L7: Demographic & Economic Change.



**2.1: UK
Human
Landscapes
- Fieldwork**

- L8: London’s Old vs. New.
- L9: London’s Urban Structure.
- L10: London & Migration.
- L11: Inequalities & Deprivation.
- L13: London’s Urban Decline.
- L14: Expansionism – Rebrand.

- L1: Rural vs. Urban Settlements.
- L2: Urban Core vs. Rural Periphery.
- L3: UK Migration Patterns.
- L4: UK Economy – North vs. South.
- L5: Globalisation, Trade & Invest.
- L7: Introducing London – History.



**1.2: UK
Human
Landscapes**

- L1: Geology – Features & Groups.
- L2: Geology – Formation & Distribution.
- L3: River Processes.
- L4: Bradshaw Model – The River Profile.
- L5: River Landforms & Formations.
- L7: Storm Hydrographs.
- L8: River Severn – Causes & Consequences.
- L9: River Severn – Preparation & Response.
- L10: Sheffield Floods.
- L11: Boscastle Floods.
- L13: Somerset Floods.
- L14: River Management Strategies.



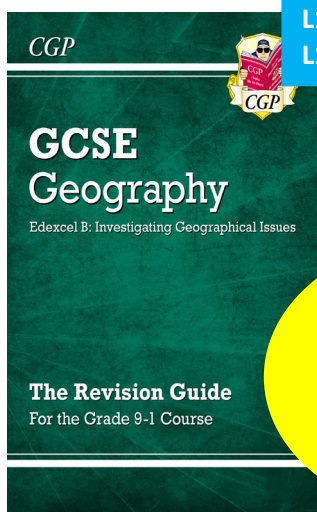
**1.1: River
Processes &
Pressures**

- 2.2: Development Dynamics
- 3.1: Challenges Of An Urbanising World
- 3.2: Megacity Mumbai

- 1.1: Superpowers & The BRICS
- 1.2: Hazardous Earth
- 2.1: Forests Under Threat



Year 9



Y11 Exams

- Paper One: 94 Marks (37.5%)**
- Paper Two: 94 Marks (37.5%)**
- Paper Three: 64 Marks (25%)**

**OUR LEARNING
JOURNEY**

Missing Lessons – Pit Stops & Assessments

A Level Geography

Topics

- Dynamic Landscapes:
- Dynamic Places:
- Physical Systems & Sustainability:
- Human Systems & Geopolitics:



Year 11 Geography: KS4



CARDINAL
NEWMAN
CATHOLIC SCHOOL

Paper One: 30%. Paper Two: 30%. Paper Three: 20%. Independent Investigation (Report): 20%.

GCSE Geography Exams – May-June



**Paper One: 94 Marks (37.5%)
Paper Two: 94 Marks (37.5%)
Paper Three: 64 Marks (25%)**



**“Enthusiastic Explorers,
Aspiring Activists,
Diligent Decision-
Makers”.**

L13: P1 Urbanising World Mock Overview.

L11: P1 Development Dynamics Mock Overview.

L10: P1 Hazardous Earth Mock Overview.

L9: India Case Study Overview – 8 Mark Practice. L8:

Mumbai – Site, Situation & Demographics.

L7: India Case Study Overview – 8 Mark Practice.

L7: Development Overview – Indicators & Theories.

L6: Tectonic – Japan vs. Haiti – 8 Mark Practice.

L4: Earth's Layers, Earthquakes & Volcanoes.

L3: Climatic – Katrina vs. Haiyan – 8 Mark Practice.

L2: Tropical Storms – Formation/Features/Dissipation.

L1: Causes & Consequences Of Climate Change.

**3.1: Exam
Preparation
– P1/P2/P3**

**3.1: Exam
Preparation
– P1/P2/P3**

L12: Paper Three Knowledge Overview.

L11: Paper Three DME – PATB, FUT & CER .

L10: Renewable Energy – Costs vs. Benefits.

L9: Consuming Energy Resources Revision.

L8: Case Study – The Athabasca Tar Sands – Canada.

L7: Energy Extraction, Production & Distribution.

L6: Classifying Energy – Renewable/Non-Renewable.

L4: Biome Threats & Conservation Strategies.

L3: TRF & Taiga – Distribution & Features.

L2: Biosphere – Processes, Resources & Theories.

L1: Global Biome Distribution.

**2.2: Paper
Three
Revision**

**2.1: Paper
Two
Revision**

L10: London Site & Situation.

L11: Opportunities/Challenges.

L12: Paper Two Knowledge Check

L13: B'Ham Site & Situation.

L14: Opportunities/Challenges.

L15: Dynamic Cities Fieldwork.

L16: Unfamiliar Investigations.

L1: Geology – Distribution/Formations

L2: Coasts – Physical Processes.

L3: Coasts – Defences & Storm Surge.

L4: Coastal Fieldwork – Hunstanton.

L5: Rivers – Physical Processes.

L7: Rivers – Storm Hydrographs.

L8: Paper Two – Physical Revision.

L10: Poverty & Theories.

L11: India – Urban Changes.

L12: India's Environment.

L13: Development Overview.

L14: Mumbai – Site & Situation.

L15: Mumbai – Demographics.

L16: Mumbai – TD & BU.

L1: Pressure Systems & Climate.

L2: Tropical Storms.

L3: Reasons For Storm Vulnerability.

L4: Katrina vs. Haiyan – Case Studies.

L5: Earth's Layers/Movement.

L7: Earthquakes & Volcanoes.

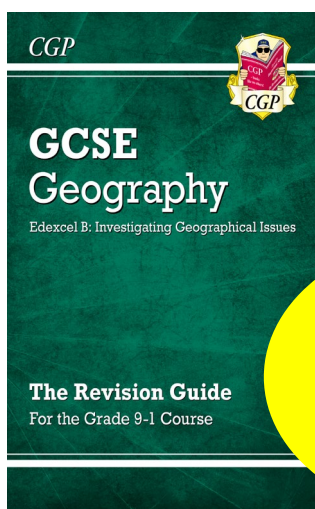
L9: Development Indicators

Y11 Exams

**Paper One: 94
Marks (37.5%)**

**Paper Two: 94
Marks (37.5%)**

**Paper Three: 64
Marks (25%)**



OUR LEARNING JOURNEY

**1.1: People &
The
Biosphere.**

L1: Global Biome Distribution.

L2: Comparing Fauna/Flora/Adaptations.

L3: Climatic Graph Comparison.

L4: Local Biome Factors – ARSD.

L5: Biosphere – Life Support System.

L7: The Role Of The Biosphere.

L8: Biosphere – Goods & Services.

L9: Overexploitation Of The Biosphere.

L10: Growing Economies – MINT Nations.

L11: Growing Resource Demand.

L13: The Theories – Malthus/Boserup.

L14: Revision – People & The Biosphere.

2.2: Consuming Energy
Resources.

3.1: Coastal Change & Conflict.

3.2: Coastal Fieldwork.

1.1: River Processes &
Pressures.

1.2: UK Human Landscapes.

2.1: UK Urban Fieldwork.

Year
10

Missing Lessons – Pit Stops & Assessments